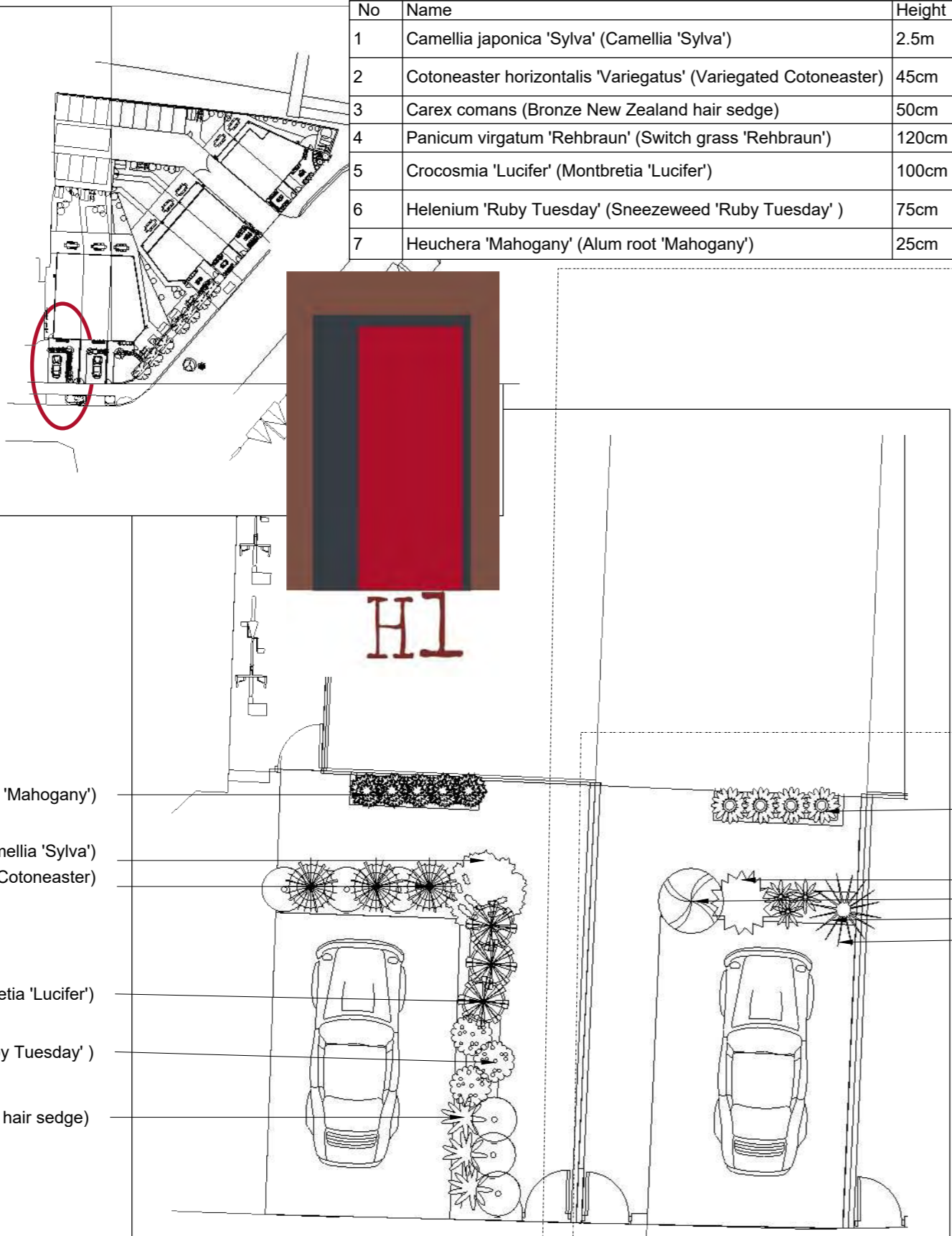




No	Name	Height	Spread	Type	EG
1	Camellia japonica 'Sylva' (Camellia 'Sylva')	2.5m	1.5m	Tree (1/2 s)	No
2	Cotoneaster horizontalis 'Variegatus' (Variegated Cotoneaster)	45cm	90cm	Shrub	Yes
3	Carex comans (Bronze New Zealand hair sedge)	50cm	50cm	Grass	Yes
4	Panicum virgatum 'Rehbraun' (Switch grass 'Rehbraun')	120cm	100cm	Grass	No
5	Crocsmia 'Lucifer' (Montbretia 'Lucifer')	100cm	100cm	Perennial	No
6	Helenium 'Ruby Tuesday' (Sneezeweed 'Ruby Tuesday')	75cm	50cm	Perennial	No
7	Heuchera 'Mahogany' (Alum root 'Mahogany')	25cm	45cm	Perennial	Yes



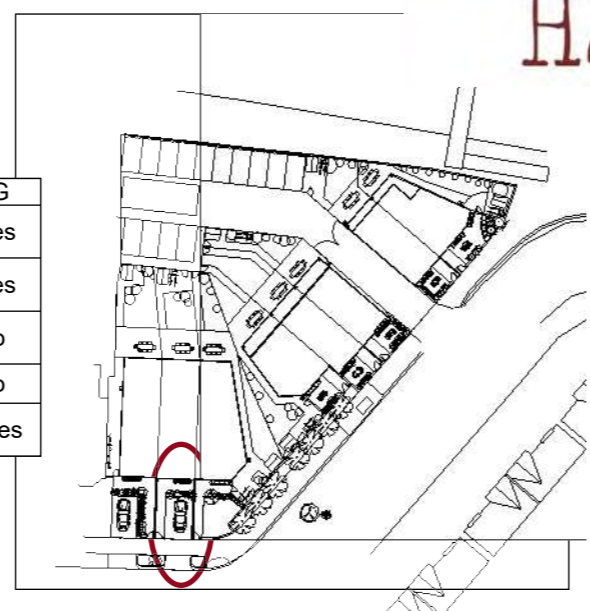
- Heuchera 'Mahogany' (Alum root 'Mahogany')
- Camellia japonica 'Sylva' (Camellia 'Sylva')
- Cotoneaster horizontalis 'Variegatus' (Variegated Cotoneaster)
- Crocsmia 'Lucifer' (Montbretia 'Lucifer')
- Helenium 'Ruby Tuesday' (Sneezeweed 'Ruby Tuesday')
- Carex comans (Bronze New Zealand hair sedge)

- Helleborus
- Phormium 'Amazing Red' (New Zealand flax 'Amazing Red')
- Photinia x
- Echinacea 'Tomato Soup' (Coneflower 'Tomato Soup')
- Eragrostis curvula 'Totnes Burgundy' (Love grass 'Totnes Burgundy')

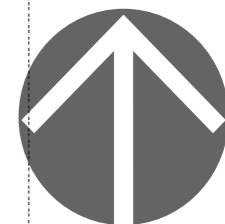
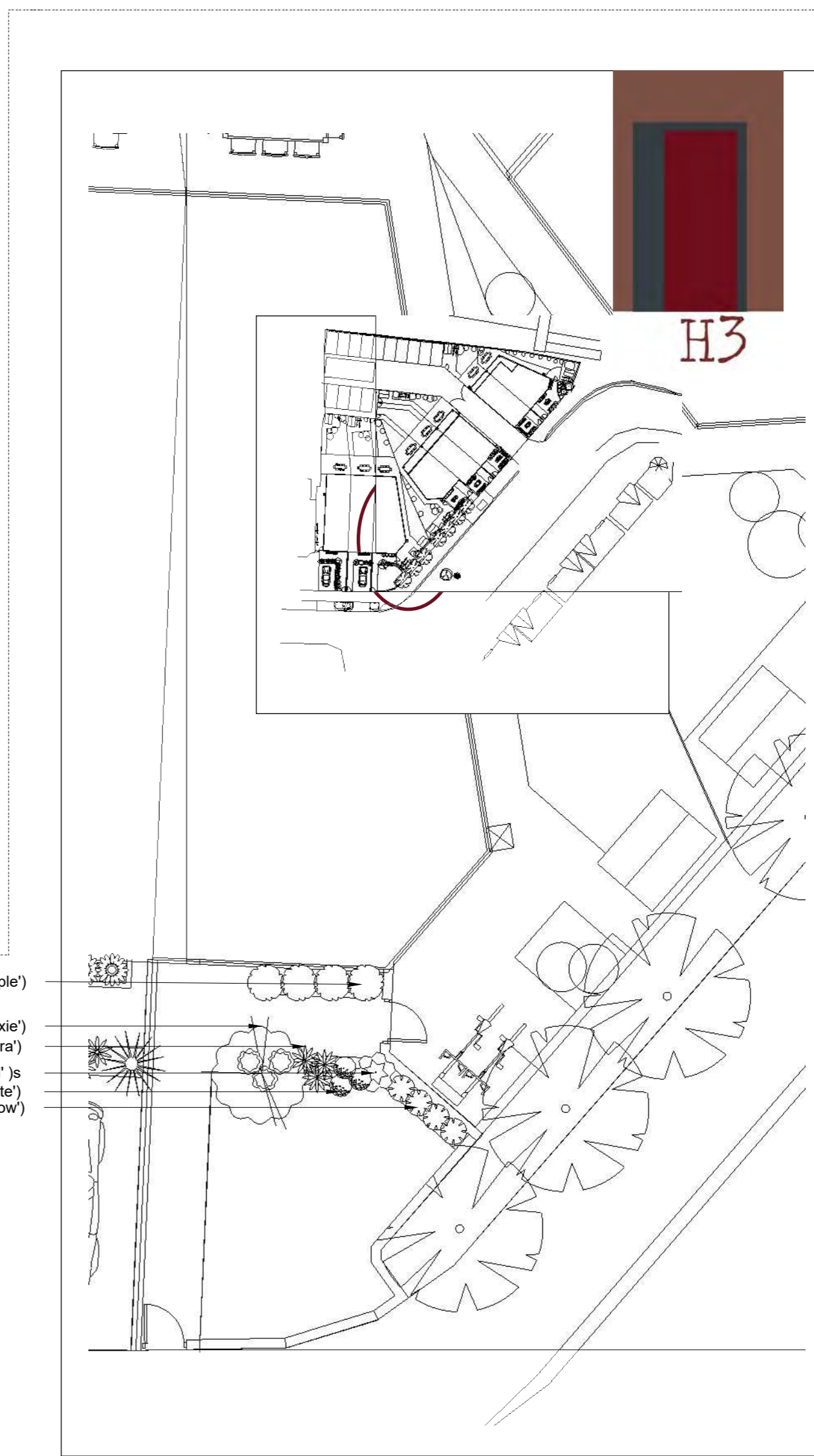
- Heuchera micrantha 'Palace Purple' (Alum root 'Palace Purple')
- Acer palmatum 'Pixie' (Japanese maple 'Pixie')
- Imperata cylindrica 'Rubra' (Cogon grass 'Rubra')
- Astelia 'Red Devil' (Bush flax 'Red Devil') s
- Hemerocallis 'Sweet Hot Chocolate' (Daylily 'Sweet Hot Chocolate')
- Euphorbia 'Ruby Glow' (Spurge 'Ruby Glow')



No	Name	Height	Spread	Type	EG
1	Photinia x fraseri 'Red Robin' (Christmas berry 'Red Robin')	200cm	100cm	Tree (1/2 s)	Yes
2	Phormium 'Amazing Red' (New Zealand flax 'Amazing Red')	100cm	100cm	Shrub	Yes
3	Eragrostis curvula 'Totnes Burgundy' (Love grass 'Totnes Burgundy')	90cm	90cm	Grass	No
4	Echinacea 'Tomato Soup' (Coneflower 'Tomato Soup')	90cm	90cm	Perennial	No
5	Helleborus x hybridus 'Red Lady' (Lady Series) (Lenten rose 'Red Lady')	45cm	50cm	Perennial	Yes

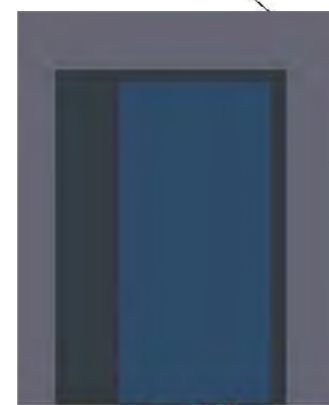
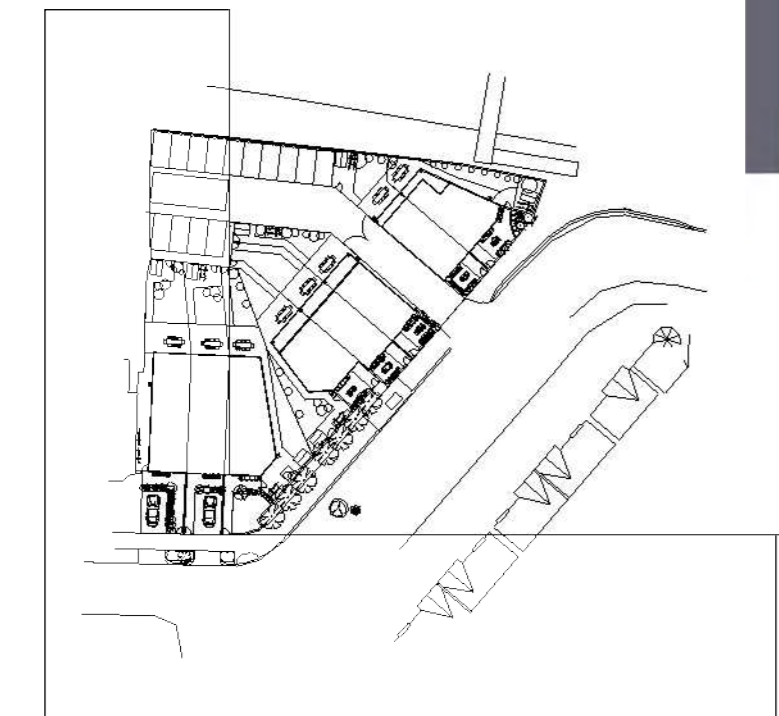
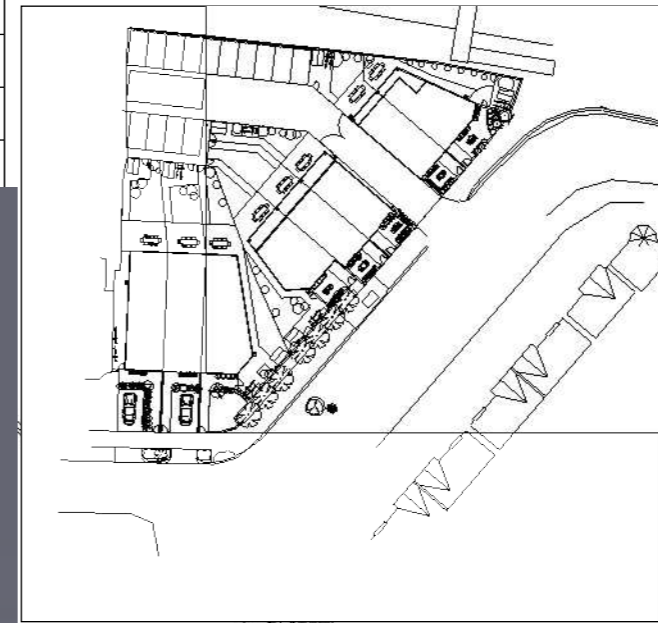


No	Name	Height	Spread	Type	EG
1	Acer palmatum 'Pixie' (Japanese maple 'Pixie')	2m	2m	Tree (1/2 s)	No
2	Imperata cylindrica 'Rubra' (Cogon grass 'Rubra')	50cm	50cm	Grass	No
3	Euphorbia 'Ruby Glow' (Spurge 'Ruby Glow')	50cm	50cm	Shrub	Yes
4	Hemerocallis 'Sweet Hot Chocolate' (Daylily 'Sweet Hot Chocolate')	60cm	60cm	Perennial	No
5	Astelia 'Red Devil' (Bush flax 'Red Devil')	60cm	80cm	Shrub	Yes
6	Ajuga reptans 'Burgundy Glow' (Bugle 'Burgundy Glow')	50cm	100cm	Perennial	Yes
7	Heuchera micrantha 'Palace Purple' (Alum root 'Palace Purple')	50cm	50cm	Perennial	Yes





No	Name	Height	Spread	Type	EG
1	Pittosporum tenuifolium 'Wrinkled Blue' (Tawhiwhi 'Wrinkled Blue')	200cm	100cm	1/2 standard	Yes
2	Hebe 'Black Beauty' (Hebe 'Black Beauty')	120cm	120cm	Shrub	Yes
3	Festuca amethystina (Hair fescue)	30cm	25cm	Grass	Yes
4	Agapanthus 'Midnight Star' (African lily 'Midnight Star')	70cm	50cm	Perennial	No
5	Hosta 'Blue Shadows' (Plantain lily 'Blue Shadows')	45cm	60cm	Perennial	No
6	Salvia 'Indigo Spires' (Salvia 'Indigo Spires')	150cm	125cm	Perennial	No
7	Ajuga reptans 'Black Scallop' (Bugle 'Black Scallop')	15cm	60cm	Perennial	Yes



H4



H6

- Salvia 'Indigo Spires' (Salvia 'Indigo Spires')
- Hosta 'Blue Shadows' (Plantain lily 'Blue Shadows')
- Festuca amethystina (Hair fescue)
- Hebe 'Black Beauty' (Hebe 'Black Beauty')
- Pittosporum tenuifolium 'Wrinkled Blue' (Tawhiwhi 'Wrinkled Blue')
- Ajuga reptans 'Black Scallop' (Bugle 'Black Scallop')
- Agapanthus 'Midnight Star' (African lily 'Midnight Star')

- Ceratostigma 'Autumn Blue' (Hardy blue-flowered leadwort 'Autumn Blue')
- Hosta sieboldiana 'Bressingham Blue' (Hosta 'Bressingham Blue')
- Juniperus scopulorum 'Blue Arrow' (Rocky Mountain juniper 'Blue Arrow')
- Panicum virgatum 'Heavy Metal' (Switch grass 'Heavy Metal')
- Echinops ritro (Small globe thistle)

- Hosta sieboldiana 'Bressingham Blue' (Hosta 'Bressingham Blue')
- Echinops ritro (Small globe thistle)
- Juniperus scopulorum 'Blue Arrow' (Rocky Mountain juniper 'Blue Arrow')
- Ceanothus 'Blue Cushion' (California lilac 'Blue Cushion')
- Iris chrysographes (Gold-marked iris)
- Panicum virgatum Purple Breeze

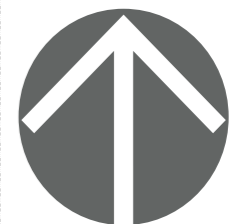
No	Name	Height	Spread	Type	EG
1	Juniperus scopulorum 'Blue Arrow' (Rocky Mountain juniper 'Blue Arrow')	2500m	50cm	Tree	Yes
2	Panicum virgatum 'Heavy Metal' (Switch grass 'Heavy Metal')	60cm	130cm	Grass	No
3	Hosta sieboldiana 'Bressingham Blue' (Hosta 'Bressingham Blue')	100cm	100cm	Perennial	No
4	Echinops ritro (Small globe thistle)	100cm	50cm	Perennial	No
5	Ceratostigma 'Autumn Blue' (Hardy blue-flowered leadwort 'Autumn Blue')	50cm	50cm	Shrub	Yes



H5

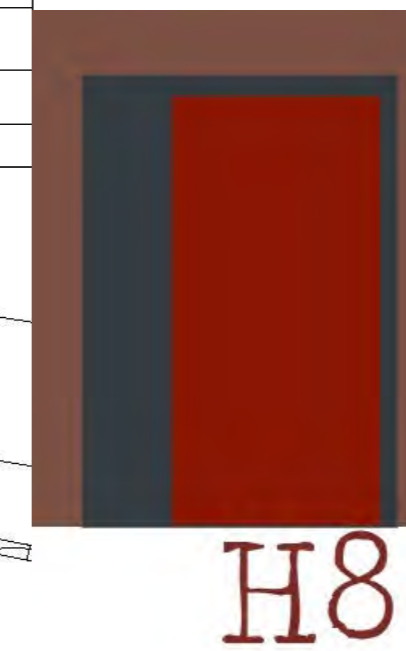


No	Name	Height	Spread	Type	EG						
1	Juniperus scopulorum 'Blue Arrow' (Rocky Mountain juniper 'Blue Arrow')	250cm	50cm	Tree	Yes						
2	Ceanothus 'Blue Cushion' (California lilac 'Blue Cushion')	100cm	75cm	Shrub	Yes						
3	Panicum virgatum Purple Breeze (Purple Switch Grass)	75cm	45cm	Grass	No						
4	Echinops ritro (Small globe thistle)	100cm	50cm	Perennial	No						
5	Hosta sieboldiana 'Bressingham Blue' (Hosta 'Bressingham Blue')	100cm	100cm	Perennial	No </tr <tr> <td>6</td> <td>Iris chrysographes (Gold-marked iris)</td> <td>50cm</td> <td>30cm</td> <td>Perennial</td> <td>No</td> </tr>	6	Iris chrysographes (Gold-marked iris)	50cm	30cm	Perennial	No
6	Iris chrysographes (Gold-marked iris)	50cm	30cm	Perennial	No						

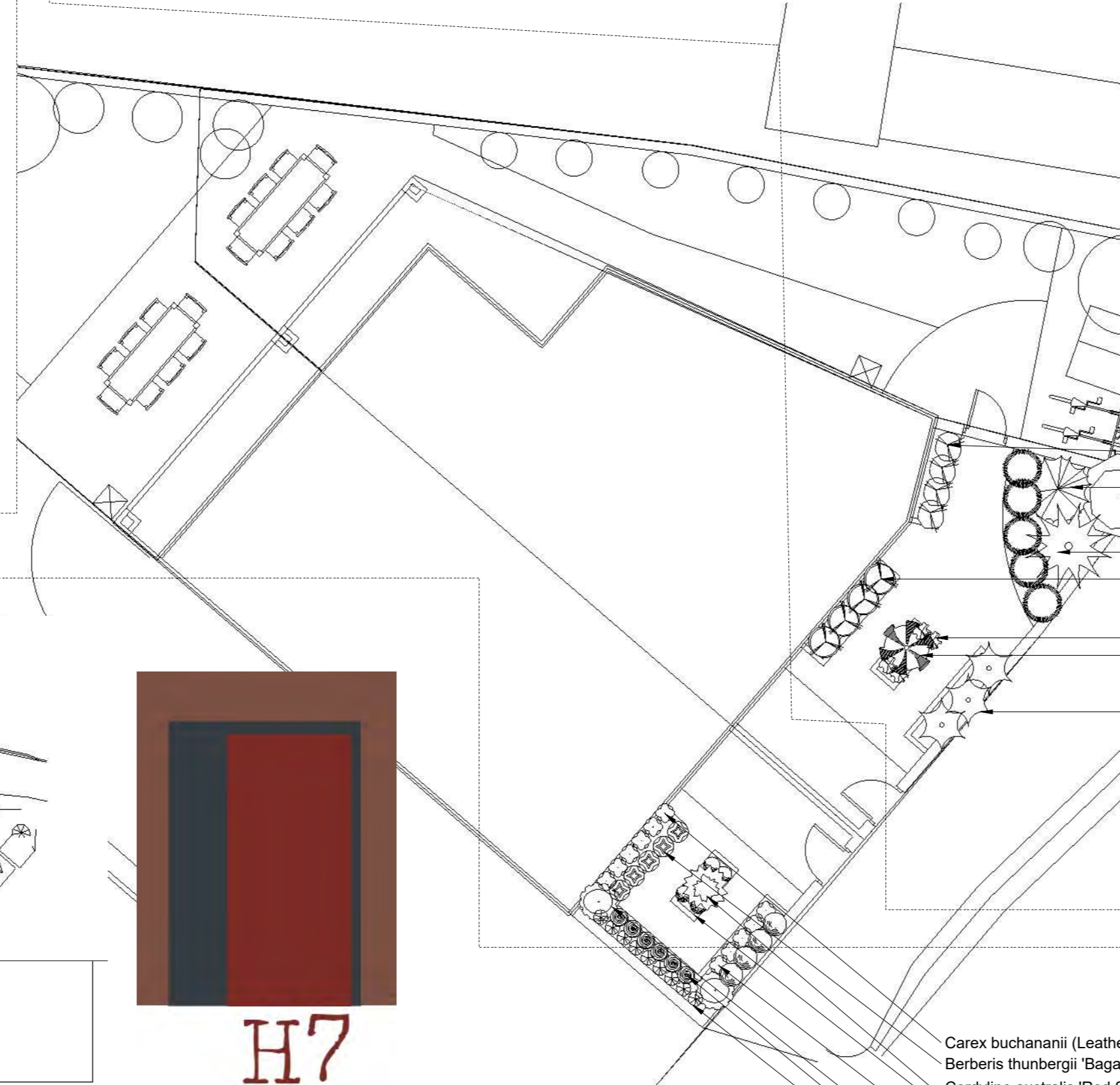


All driveways are to be surfaced with resin bonded aggregate which is fully permeable to be compliant with planning legislation.

No	Name	Height	Spread	Type	EG
1	Cotinus 'Flame' (Smoke bush 'Flame')	200cm	100cm	Tree (1/2 s)	No
2	Berberis thunbergii f. atropurpurea 'Red Pillar' (Japanese barberry 'Red Pillar')	150cm	150cm	Shrub	No
3	Dryopteris lepidopoda (Sunset fern)	60cm	60cm	Fern	Yes
4	Nandina domestica 'Fire Power' (Heavenly bamboo 'Fire Power')	50cm	50cm	Shrub	Yes
5	Amelanchier spicata (Dwarf serviceberry)	200cm	200cm	Shrub	No
6	Stipa arundinacea (Pheasant's tail grass)	100cm	120cm	Grass	Yes
7	Kniphofia 'Papaya Popsicle' (Popsicle Series) (Red hot poker 'Papaya Popsicle')	45cm	50cm	Perennial	Yes
8	Euphorbia griffithii 'Fireglow' (Spurge 'Fireglow')	90cm	60cm	Perennial	No
9	Heuchera 'Caramel' (Alum root 'Caramel')	25cm	30cm	Perennial	Yes

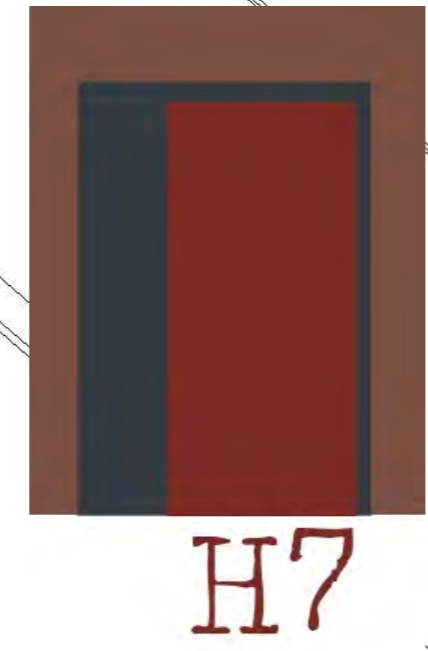


H8



- Euphorbia griffithii 'Fireglow' (Spurge 'Fireglow')
- Berberis thunbergii f. atropurpurea 'Red Pillar' (Japanese barberry 'Red Pillar')
- Amelanchier spicata (Dwarf serviceberry)
- Stipa arundinacea 'Pheasant's tail grass'
- Nandina domestica 'Fire Power' (Heavenly bamboo 'Fire Power')
- Heuchera 'Caramel' (Alum root 'Caramel')
- Cotinus 'Flame' (Smoke bush 'Flame')
- Kniphofia 'Papaya Popsicle' (Popsicle Series) (Red hot poker 'Papaya Popsicle')

No	Name	Height	Spread	Type	EG
1	Cordylina australis 'Red Star' (Cabbage palm 'Red Star')	150cm	150cm	Tree	Yes
2	Berberis thunbergii 'Bagatelle' (Japanese barberry 'Bagatelle')	30cm	40cm	Shrub	No
5	Lonicera nitida 'Red Tips' (Honeysuckle 'Red Tips')	120cm	120cm	Shrub	Yes
3	Carex buchananii (Leatherleaf Sedge)	50cm	50cm	Grass	Yes
4	Uncinia rubra 'Belinda's Find' (Red hook sedge 'Belinda's Find')	30cm	30cm	Grass	Yes
6	Crocosmia 'Walberton Red' (Montbretia 'Walberton Red')	75cm	45cm	Perennial	No
7	Echinacea 'Hot Papaya' (Coneflower 'Hot Papaya')	80cm	60cm	Perennial	No
8	Heuchera 'Marmalade' (Alum root 'Marmalade')	45cm	45cm	Perennial	Yes



H7

- Carex buchananii (Leatherleaf Sedge)
- Berberis thunbergii 'Bagatelle' (Japanese barberry 'Bagatelle')
- Cordylina australis 'Red Star' (Cabbage palm 'Red Star')
- Heuchera 'Marmalade' (Alum root 'Marmalade')
- Carex buchananii (Leatherleaf Sedge)
- Lonicera nitida 'Red Tips' (Honeysuckle 'Red Tips')
- Crocosmia 'Walberton Red' (Montbretia 'Walberton Red')
- Uncinia rubra 'Belinda's Find' (Red hook sedge 'Belinda's Find')

